



CATALOGUE



G&Y PRESS & DIE

A Division of Nalis Pty Ltd

	Page
DROP TAIL GATE HINGE	2
LOCKING DEVICES	
Adjustable Catches	3
Corner Catches	4
Tailgate Catches	5
Over Centre Catches	8
TIPPER TAIL GATE KITS	9
VAN DOOR HINGES	11
‘U’ BOLTS	18
STRAPS & TIE DOWNS	19
MUD GUARDS	20
TRAILER AND CHASSIS PARTS	
Axel Saddles	21
Back Weld Plates	22
Fish Plates	23
Roller Brackets	24
Shackle Plates & Spring Hangers	25
Winch Plates	26
FENCING PRODUCTS	
Pipe Caps	27
Post Flanges & Spearheads	28
MISCELLANEOUS	
Body Blocks & Domed Discs	29
Pallet Feet & Tent Pegs	30



GY 1133



GY 1131



**GY 1129 &
GY 1130**



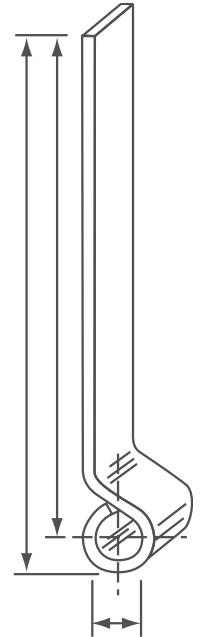
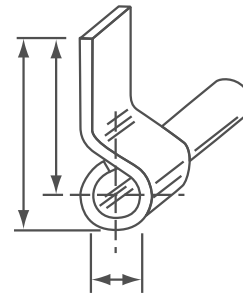
GY 1152A



GY 1146



GY 1145



NOTE

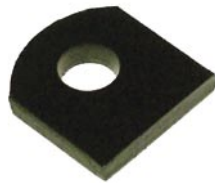
Available in right and left hand assembly please advise requirements

Holes provided in ZP gudgeons

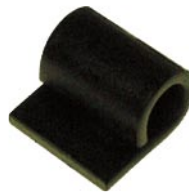
LH drawn



GY 1191 & 1192



GY 1137



GY 1190



GY 1136



**GY 1134
(LH & RH)
(Black)**



GY 1101

DROPSIDE TAILGATE HINGE

PART No.	A	B	C	FINISH
GY 1129	100	87.5	13	BLACK MS
GY 1130	100	87.5	13	ZINC PLATED
GY 1131	305	292.5	13	BLACK MS
GY 1133	50	40	13	BLACK MS
GY 1145	95	83	13	BLACK MS
GY 1146	95	83	13	ZINC PLATED
GY 1152A	237	225	13	ZINC PLATED
GY 1190	41	25	16	BLACK MS

ALL HOLES 8.3mm DIAMETER

GUDGEON ROPERAIL BRACKET

PART No.	A	B	C	FINISH
GY 1186	111.6	94		ZINC PLATED
GY 1187	92.6	75		ZINC PLATED
GY 1188	87.6	75		ZINC PLATED

GUDGEONS

PART No.	A	B	C	FINISH
GY 1134	50	39.5	13	BLACK MS NO HOLES
GY 1135A	50	39.5	13	ZINC PLATED 2 HOLES
GY 1147	22	12.5	13	BLACK MS
GY 1101	1 HOLE			ZINC PLATED
GY 1101	2 HOLES			ZINC PLATED
GY 1103				BLACK
GY 1103A	LONG			ZINC PLATED
GY 1102				BLACK MS
GY 1191LH	65	50	16	BLACK MS
GY 1192RH	65	50	16	BLACK MS



GY 1102



GY 1103A (ZP)



GY 1103



GY 1186



GY 1187



**GY 1188
(LH & RH)**

Adjustable Catches



GY 703
Small
Medium
Large



GY 703L
Small
Medium
Large

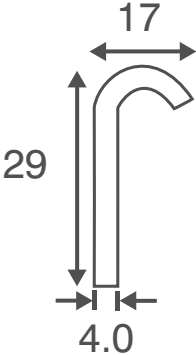
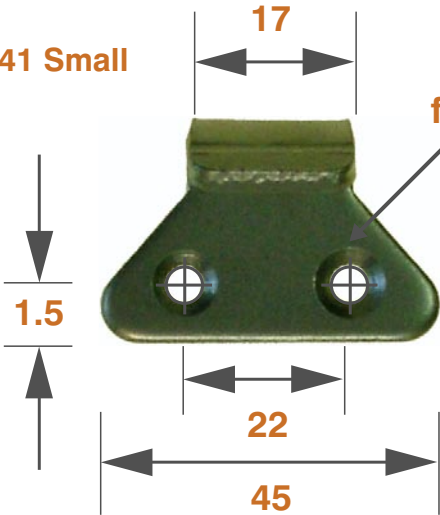


GY 703-41
Small
Medium
Large



GY 703-41
Small
Medium
Large

GY 703-41 Small



Corner Catches

GY 1197



SPRING CORNER FASTENER KIT

GY 1197	SPRING CORNER FASTNER
1	14mm M/STELL HDLE/PLAST CAP
1	CORNER BRACKET
1	GALVANISED SPRING
1	M14 NYLOC NUT
1	CATCH PLATE
FINISH	ZINC PLATED

GY 1196



SPRING CORNER FASTENER KIT

GY 1196	SPRING CORNER FASTNER
1	12.5mm HARD WIRE HANDLE
1	NYLON BRUSH
1	GALVANISED SPRING
1	M12 NYLOC NUT
1	CATCH PLATE LH RH
FINISH	ZINC PLATED

Tailgate Catches



GY 1182



GY 1183



GY 1189



GY 1184

TAILGATE TOGGLE CATCH KIT

GY 1180 KIT ZINC PLATED		
1	1182	CATCH 25mm THREAD
1	M12	NUT
1	GY 1184	PLATE
1	GY1185	RUBBER WASHER

GY 1181 KIT ZINC PLATED		
1	1183	CATCH 60mm THREAD
1	M12	NUT
1	GY 1184	PLATE
1	GY 1185	RUBBER WASHER

1	GY 1189	WELD ON
---	---------	---------



GY 1185

Tailgate Catches

GY 1105



GY 1106



GY 1107A



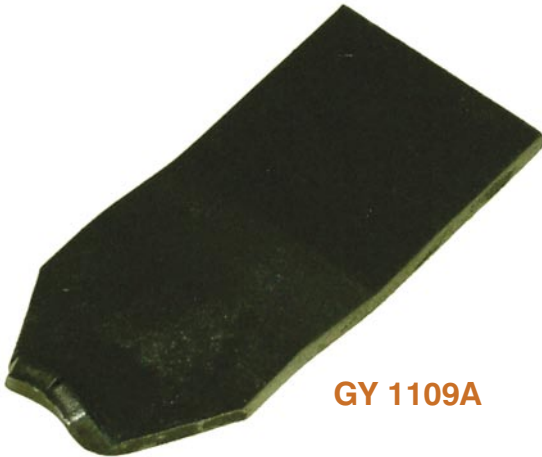
TAILGATE CATCHES

GY 1105	UTILITY CNR FASTNER	ZINC PLT
GY 1106	BENT TONGUE	59mm straight 35mm return
GY 1106A		47mm straight 47mm return
GY 1107	STRT TONGUE one hole	ZINC PLT
GY 1107A	STRT TONGUE two hole	ZINC PLT

Tailgate Catches



GY 1108A



GY 1109A



GY 1110A

TAILGATE CATCHES

GY 1108A	TRUCK CNR FASTENER	ZINC PLT
GY 1109A	WELD ON STRT TONGUE	ZINC PLT
GY 1110A	BENT WELD ON TONGUE	ZINC PLT



Over Centre Catches



GY 3040

GY 3040 SPARE WHEEL CARRIER
Toggle catch for 25 NB pipe fixing

GY 3041 SPARE WHEEL CARRIER
Toggle catch for plate fixing

GY 3046 BOLT ON HOLT
For Toggle catches

GY 3047 LOCATING CUSHION
For spare wheel carrier suit 25 nb pipe



GY 3046



GY 3047



GY 3041



Extra Light GY 1419

Heavy Duty GY 1423

Medium GY 1423A



TWO WAY TIPPER TAILGATE KIT

30mm Diameter comprises of

1 ONLY	GY1114	PIN YOKE or
1 ONLY	GY114A	CORNER PIVOT YOKE
1 ONLY	GY1115	SLEEVE
1 ONLY	GY1116	STOP
1 ONLY	GY1117	HINGE PIN
2 ONLY	GY1118	TAILGATE HINGE
2 ONLY	GY1119	PIVOT PINS
1 ONLY	GY1120	YOKE
1 ONLY	GY1121	C BRACKET
1 ONLY	GY1123	FIGURE 8

TWO WAY TIPPER TAILGATE KIT HEAVY DUTY

36mm Diameter comprises of

1 ONLY	GY114B	PIN & YOKES or
1 ONLY	GY114C	CORNER PIVOT YOKE
1 ONLY	GY1115A	SLEEVE
1 ONLY	GY1116A	STOP
1 ONLY	GY1117	HINGE PIN
2 ONLY	GY1118	HINGE
2 ONLY	GY1119A	PIVOT PIN
1 ONLY	GY1120A	PIVOT PIN YOKE
1 ONLY	GY1121	C BRACKET
1 ONLY	GY1123	FIGURE 8

TIPPER TAILGATE KIT FIXED

30mm Diameter comprises of

2 ONLY	GY1120	YOKES
2 ONLY	GY114A	PIVOT PINS
1 ONLY	GY1115	SLEEVE
1 ONLY	GY1116	STOP

FIXED TIPPER TAILGATE HEAVY DUTY

36mm Diameter comprises of

2 ONLY	GY1120	PIVOT PIN YOKE
2 ONLY	GY114A	PIVOT PIN
1 ONLY	GY1115	SLEEVE
1 ONLY	GY1116	STOP



Tipper Kit Parts



GY 1114A



GY 1114B



GY 1114B EXTENDED



GY 1115A



GY 1116



GY 1117



GY 1118



GY 1119A



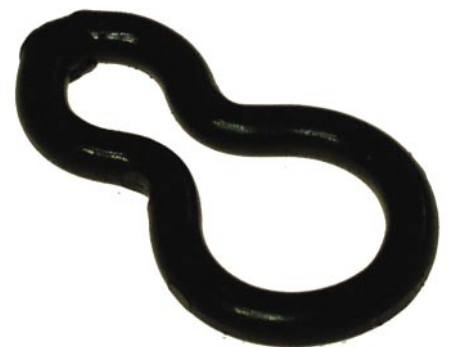
GY 1120 & 1120A



GY 1120 EXTENDED



GY 1121



GY 1123



GY 1124



VAN DOOR HINGES

GY 1124	BOLT ON HINGE
	180 OPENING
	ZINC PLATED



GY 1125

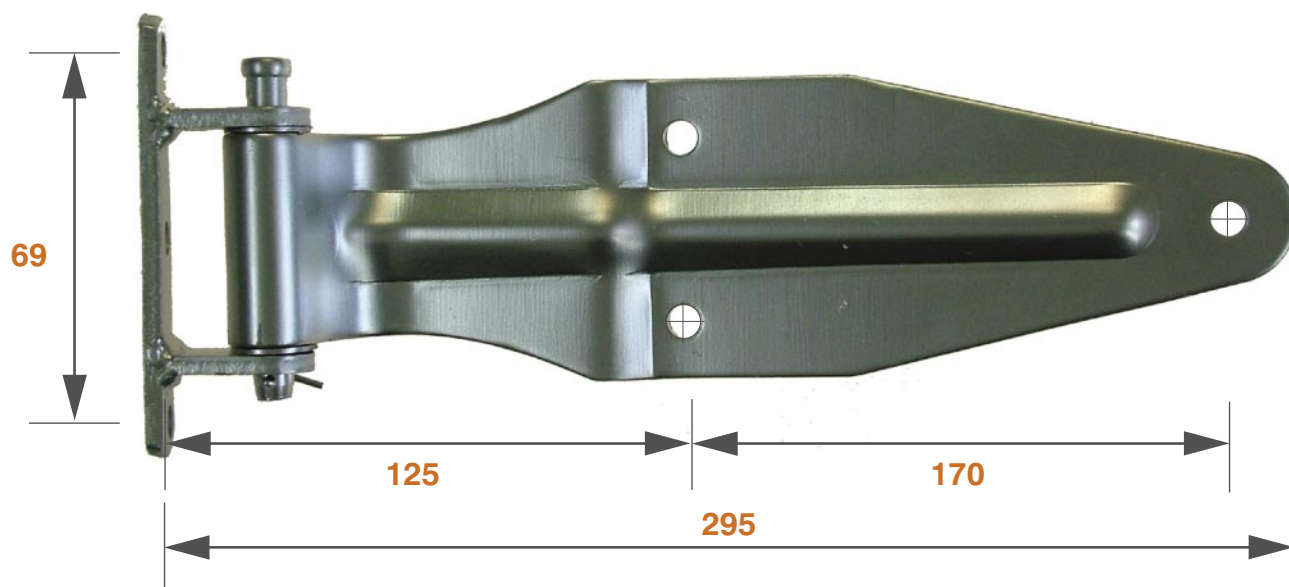


VAN DOOR HINGES

GY 1125	BOLT ON HINGE
	270 OPENING
	ZINC PLATED
GY 1125A	WELD ON HINGE
	270 OPENING
	ZINC PLATED

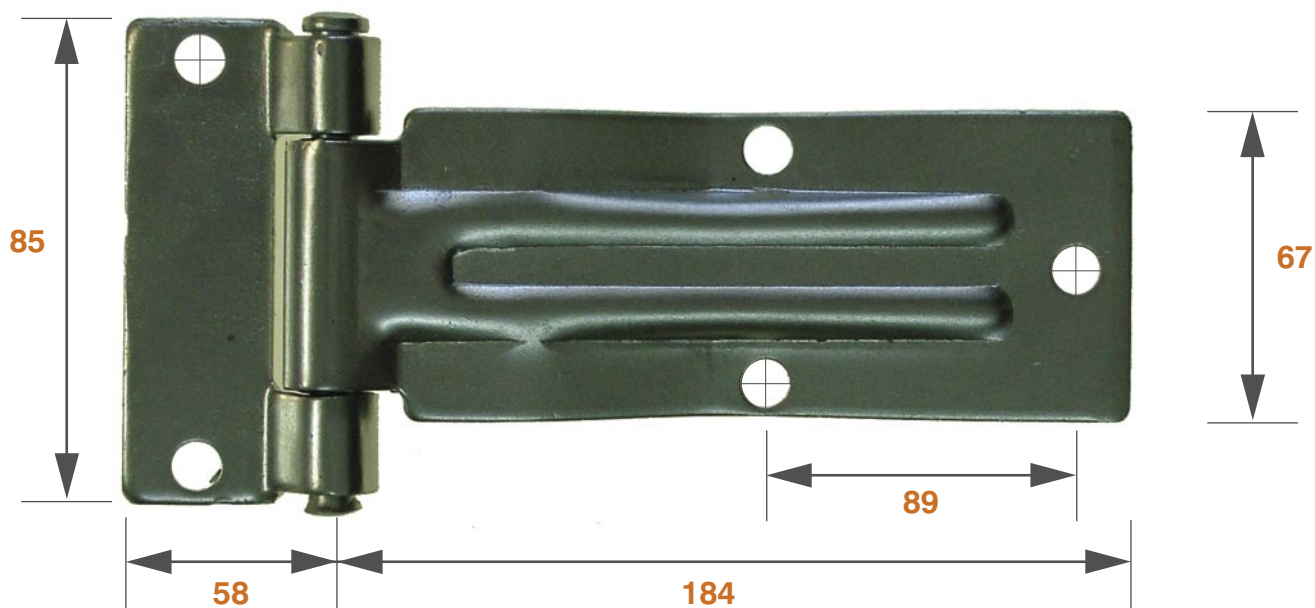


GY 1126





GY 1127





GY 3020



DOOR RETAINER

GY 3020 For holding doors open at 270.
Zinc plated finish.

A collection of various metal hardware components, including hinges, brackets, and fasteners, arranged on a white background. The items include a large central hinge with multiple mounting plates, a long curved bracket, a small pin, a small washer, a small ring, and several other smaller brackets and fasteners.



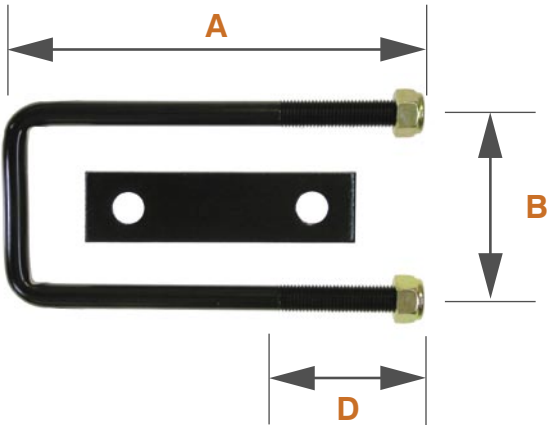
GY 3000



CAM ACTION LOCK KIT

ITEM	PART No	QTY
BEARING BOTTOM	3001	4
BEARING TOP	3002	4
LOCK STRIKER	3003	2
DOVETAIL CAM	3004	2
LOCKING LEVER	3005	1
U CONNECTOR	3006	1
COLLAR	3007	2
RIVET	3008	1
LOCK PLATE ASSY	1011	1
LOCK SWIVEL	1012	1
SWIVEL BRUSH	1013	1

GY 1157 - 1162



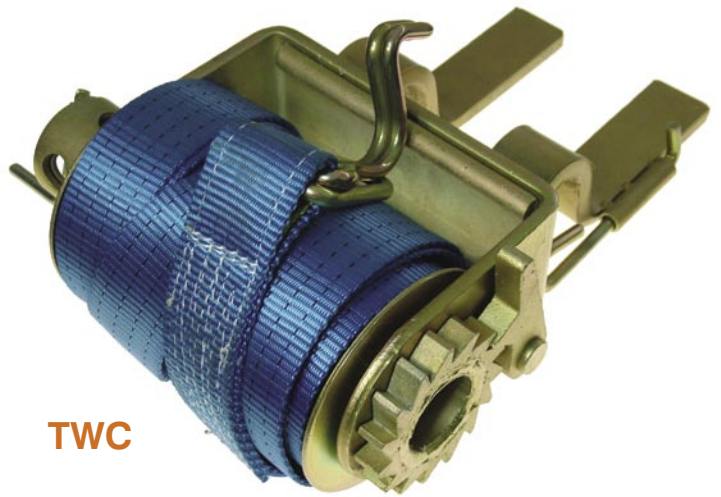
NB Two only M16 Nyloc nuts are supplied with each U bolt.
16mm diameter black mild steel

GY 1162 U BOLT PLATE

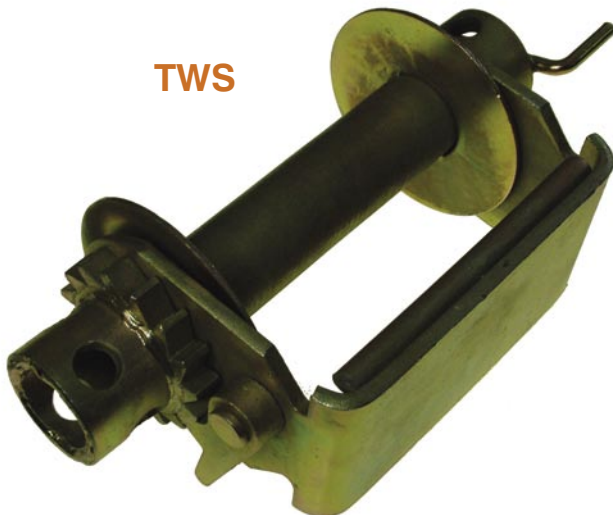
PART No.	A	B	C	D
GY 1155	220	104	88	75
GY 1156	266	104	88	75
GY 1157	318	104	88	75
GY 1158	368	104	88	75
GY 1159	420	104	88	75
GY 1160	470	104	88	75
GY 1161	520	104	88	75



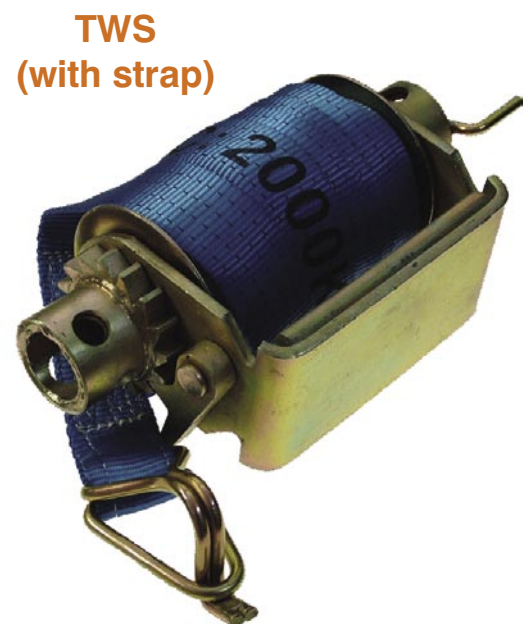
TS



TWC



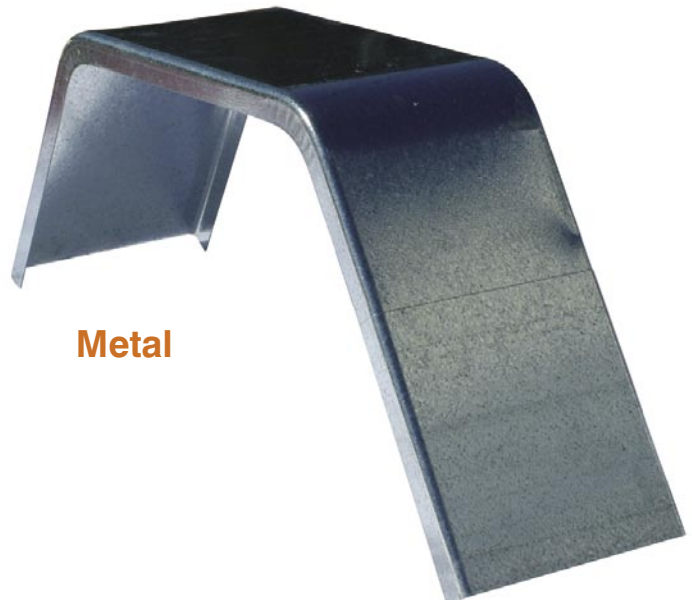
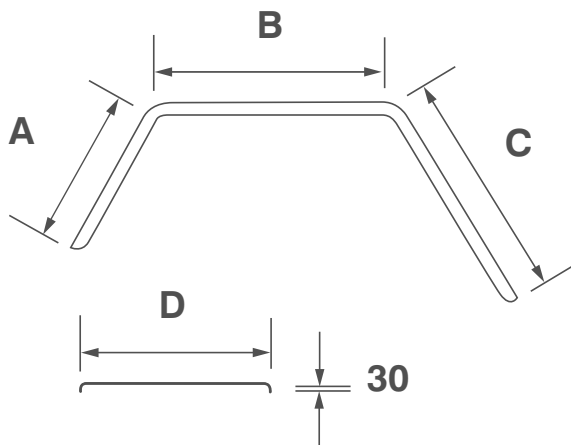
TWS



TWS
(with strap)



Plastic



Metal

STANDARD MUDGUARDS - GALVABOND

PART No.	A	B	C	D	TYPE	GUAGE
GY 105	355	450	430	230	13" - 14" WHEEL	1.2mm
GY 105A	355	450	355	230	13" - 14" WHEEL SHORT	1.2mm
GY 107	500	605	620	483	16" DUAL GUARD	1.2mm
GY 112	500	500	620	230	16" SMALL 4 W D	1.2mm
GY 112A	400	500	500	230	16" SMALL 4 W D SHORT	1.2mm
GY 113	355	1260	430	230	13" - 14" WHEEL TANDEM	1.2mm
GY 113A	355	1260	430	230	13" - 14" WHEEL TANDEM	1.6mm
GY 114	325	350	430	230	10" WHEEL	1.2mm
GY 115	500	500	620	300	16" WHEEL 4 W D WIDE	1.6mm
GY 116	500	1460	620	300	16" WHEEL TANDEM	1.6mm

MUD FLAP STRAP GY 106 3mm Zinc plated

[BACK TO INDEX](#)



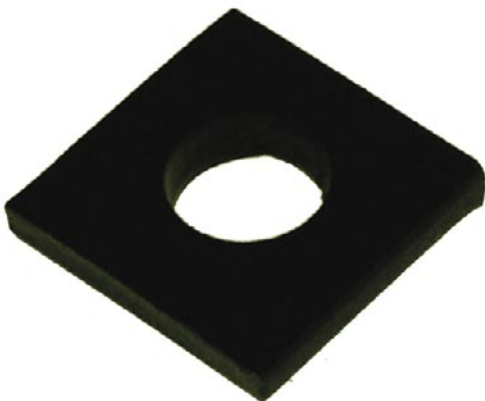
Axel Saddles



GY11



GY9



GY 16



GY 72, GY 73, GY 74, GY 75

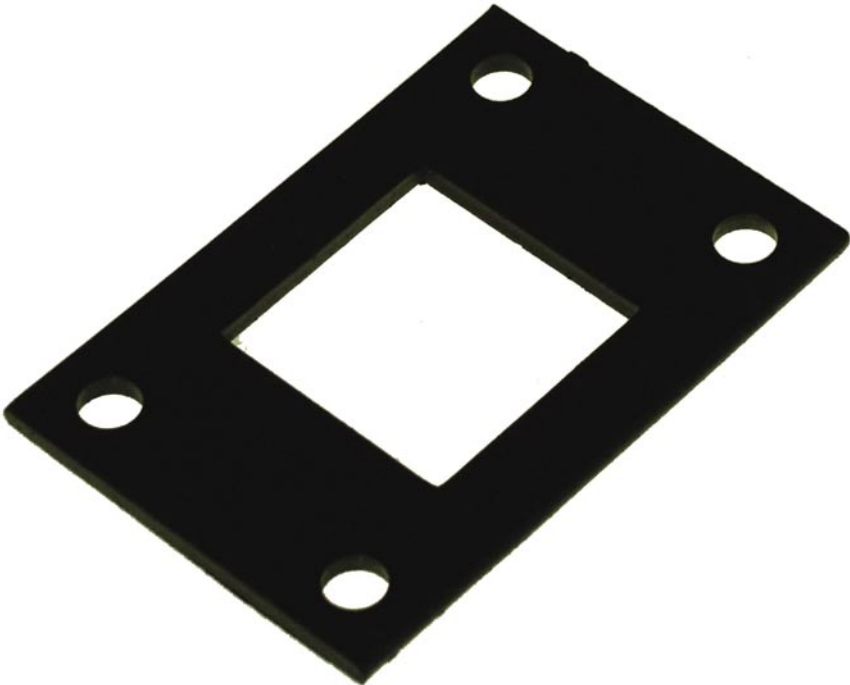
GY 16 **AXLE SADDLE**
40 x 40 x 8mm
18mm hole in centre

AXLE SADDLES

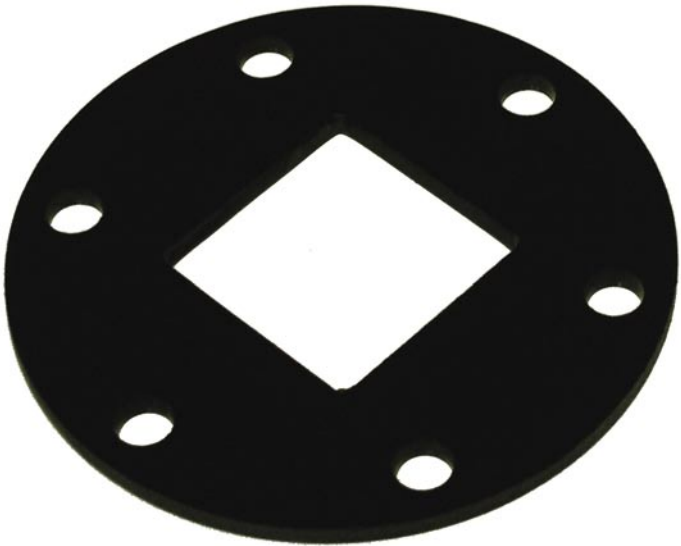
PART No.	MAT	AXLE SIZE
GY 72	40 x 8	40sq
GY 73	40 x 8	45sq
GY 74	40 x 8	50sq
GY 75	40 x 8	39 ROUND



Back Weld Plates



C1102 REC



C1102 ROUND

BACKWELD PLATES

PART No.	AXLE SIZE
C1101 REC	40
C1102 REC	45
C1101 ROUND	40
C1102 ROUND	45
C1104 ROUND	39 DIA.
C1501 SQ	40
C1901 SQ	45



Fish Plates



GY 27, GY 29, GY 30, GY 31

FISH PLATES

PART No.	GUAGE	AXLE	SPRING	HOLE SIZE
GY 27	6mm	40mm	45mm	11mm
GY 29	10mm	40mm	45mm	14mm
GY 30	10mm	45mm	45mm	14mm
GY 31	10mm	50mm	45mm	14mm



Roller Brackets



GY 59



GY 80



GY 92



GY 97



GY 98

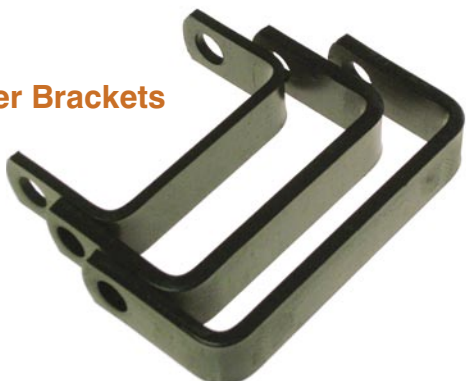
- GY 7A ROLLER BRACKET**
Material 32 x 6 108mm I D
Finish Black
- GY 13 ROLLER BRACKET**
Material 32 x 8 127mm I D
Finish Black
- GY 15 ROLLER BRACKET**
Material 32 x 8 155mm I D
Finish Black
- GY 59 DOUBLE ROLLER AXLE**
12mm Mild Steel
206mm Overall
- GY 97 SLOTTED BUNK BRACKET**
Material 50 x 8 Slot size 20 x 200
- GY 98 SLOTTED ANGLE BRACKET**
45 x 55 x 5 Slot size 22 x 155

ZINC PLATED ADJUSTING PLATE

PART No.	LENGTH	THREAD	HOLE	DIA
GY 80	250	175	11mm	M 20
GY 81	300	225	11mm	M 20
GY 82	350	275	11mm	M 20
GY 83	400	325	11mm	M 20
GY 91	150	100	11mm	M 16
GY 92	200	150	11mm	M 16
GY 93	250	200	11mm	M 16
GY 94	300	250	11mm	M 16

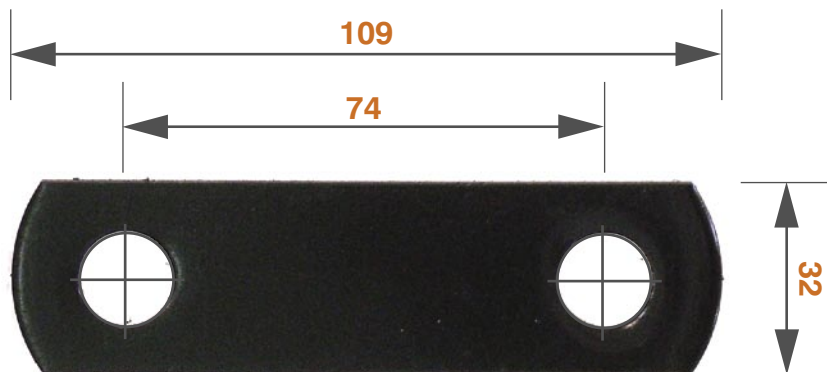
All bolts supplied complete with 2 galvanised nuts and 2 galvanised flat washers

Roller Brackets

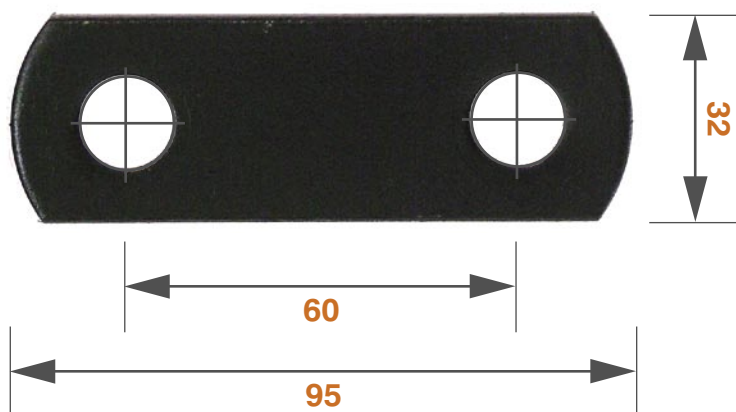




Shackle Plates & Spring Hangers



GY1 & 2



- GY 1** **SHACKLE PLATE SHORT**
14.3mm Holes
60mm Hole centres
material 32 x 8mm
- GY 2** **SHACKLE PLATE LONG**
14.3m Holes
74mm Hole Centres
- GY 61** **SHACKLE U PLATE**

- GY 21** **ROCKER ARM HANGER**
With Gusset. Material 50 x 10
19mm hole
- GY 21A** **ROCKER ARM HANGER**
With Gusset. Material 50 x 10
14.3mm hole
- GY 22** **ROCKER ARM HANGER**
No Gusset. Material 50 x 10
19mm hole



GY 21 & GY 21A



- GY 6** **SPRING HANGER**
Material 32 x 8mm to suit 1 3/4 Spring 14.3
Holes reamed
- GY 6A** **FRONT SPRING HANGER**
Material 32 x 8mm to suit 1 3/4 Spring 12.7 Hole
- GY 9** **SPRING SLIPPER HANGER**
Material 32 x 8mm to suit 1 3/4 Spring

GY 6C



Winch Plates



GY 57



GY 58



GY 60A

- | | |
|--------|---|
| GY 60A | UTILUX PLUG BASE 4 HOLE |
| GY 57 | WINCH BASE PLATE
2 Hole Material 32 x 6
18mm Hole in centre |
| GY 58 | WINCH BASE PLATE
4 Hole Material 150 x 6 |



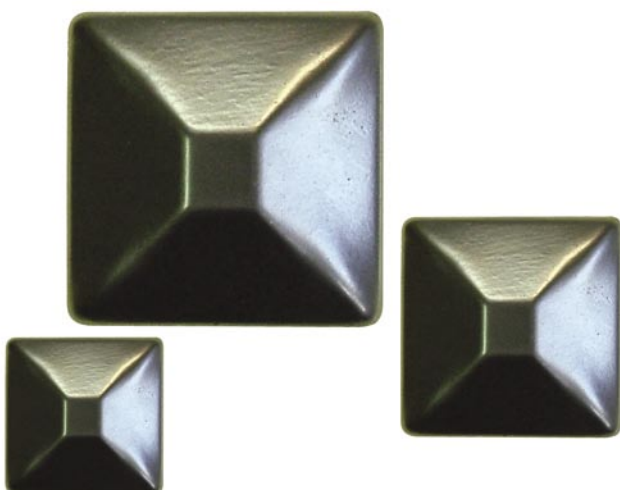
Pipe Caps



PIPE CAPS

Pipe Caps from GalvaBond

PIPE SIZE		QTY IN BAG
NB	OD	
20	26.9	100
25	33.7	400
32	42.4	250
40	48.3	200
50	60.3	125
65	76.1	100
80	88.9	75
90	101.6	75
100	114.3	50
125	139.7	40
150	165.1	25



SQUARE Pipe Caps made from GalvaBond

25mm x 25mm

30mm x 30mm

35mm x 35mm

40mm x 40mm

50mm x 50mm

65mm x 65mm

75mm x 75mm

100 x 100mm

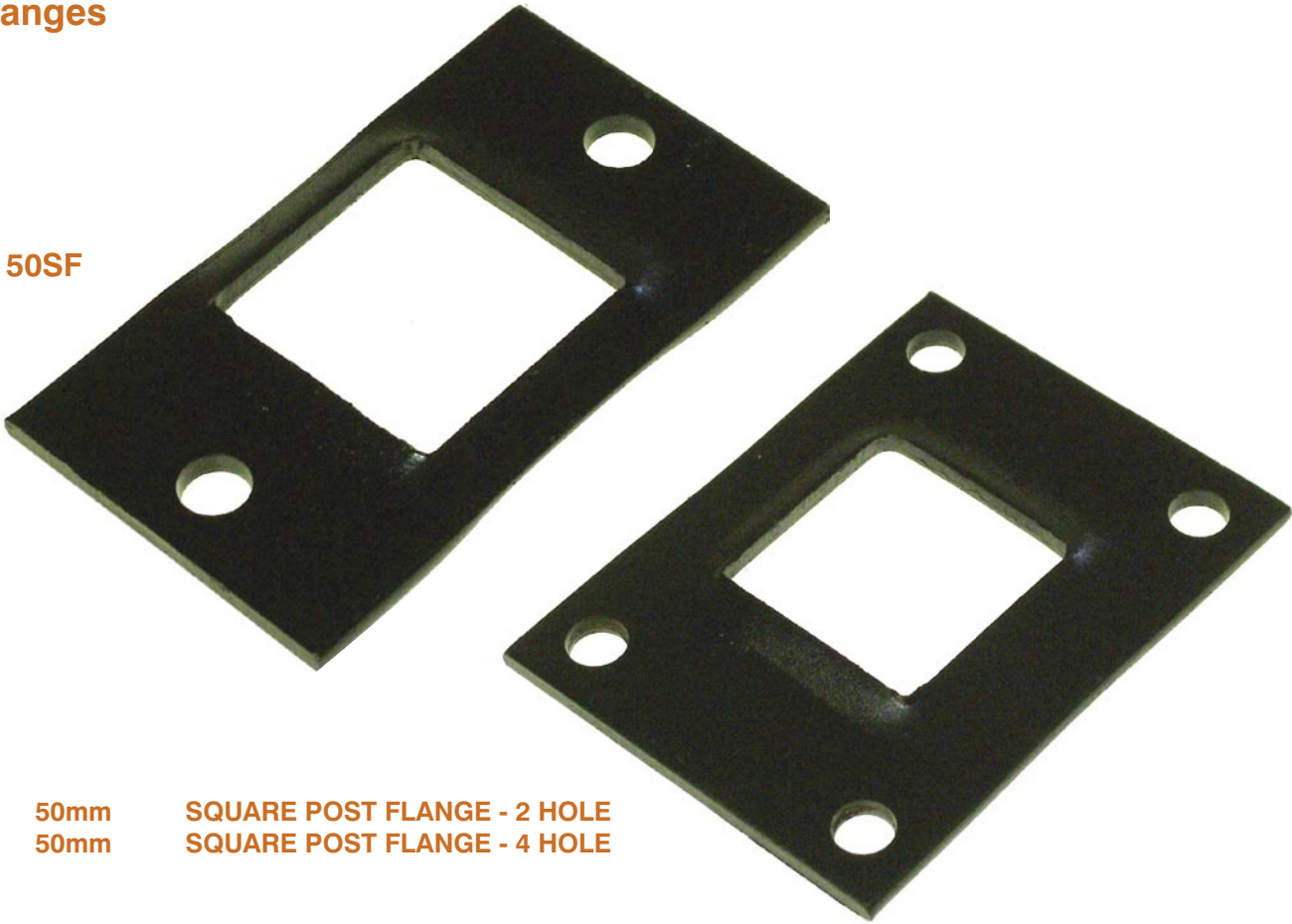
RECTANGULAR Pipe Caps made from GalvaBond

65mm x 35mm

75mm x 50mm

Post Flanges

GY 50SF



50mm
50mm

SQUARE POST FLANGE - 2 HOLE
SQUARE POST FLANGE - 4 HOLE

Spear Heads

SPEARHEADS

LARGE x 5mm
LARGE x 3mm
SMALL x 5mm
SMALL x 3mm



GY SPEARS

Body Blocks



GY 1150



GY 1164

- GY 1150

TRAY BODY MOUNTING
BRACKET Rail height 100mm
ZINC PLATED
- GY 1164

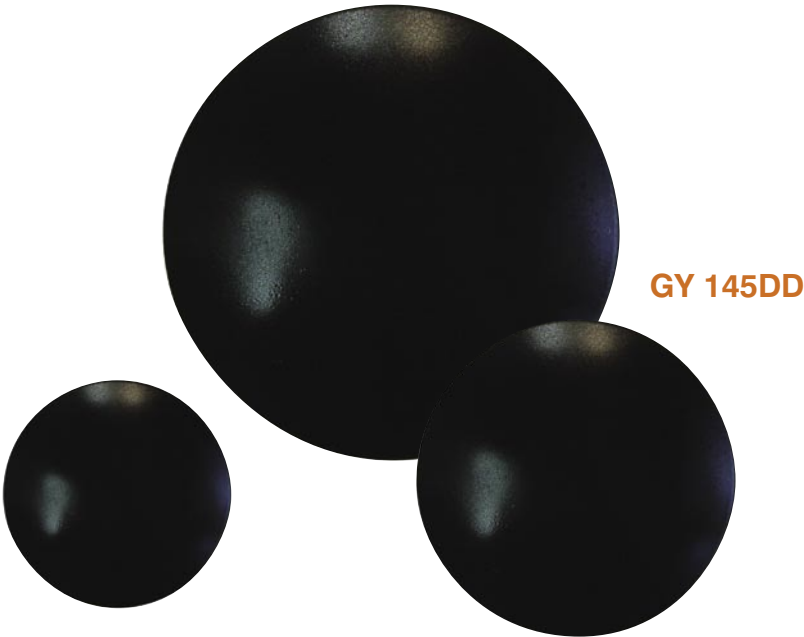
TRAY BODY MOUNTING
BRACKET Rail height 50mm
ZINC PLATED

Domed Discs

DOMED DISCS
Stock sizes are

76mm x 1.6mm
100mm x 1.6mm
110mm x 1.6mm
147mm x 3mm

Various sizes made to order.



GY 145DD



Pallet Feet



PALLET FEET

SQUARE	to suit 75 sq tube
ROUND	to suit 65 NB tube
CONICAL	to suit 50 NB tube



Tent Pegs



TENT PEGS

PART No.	OVERALL SIZE	DIA.	FINISH
GY 4060	210	6.3	GALVANISED
GY 4081	300	8	GALVANISED
GY 4101	350	10	GALVANISED



G&Y PRESS & DIE

A Division of Nalis Pty Ltd

Ph: (08) 9417 9008 Fax: (08) 9417 7234 1-7 Buckley St. Jandakot WA 6164